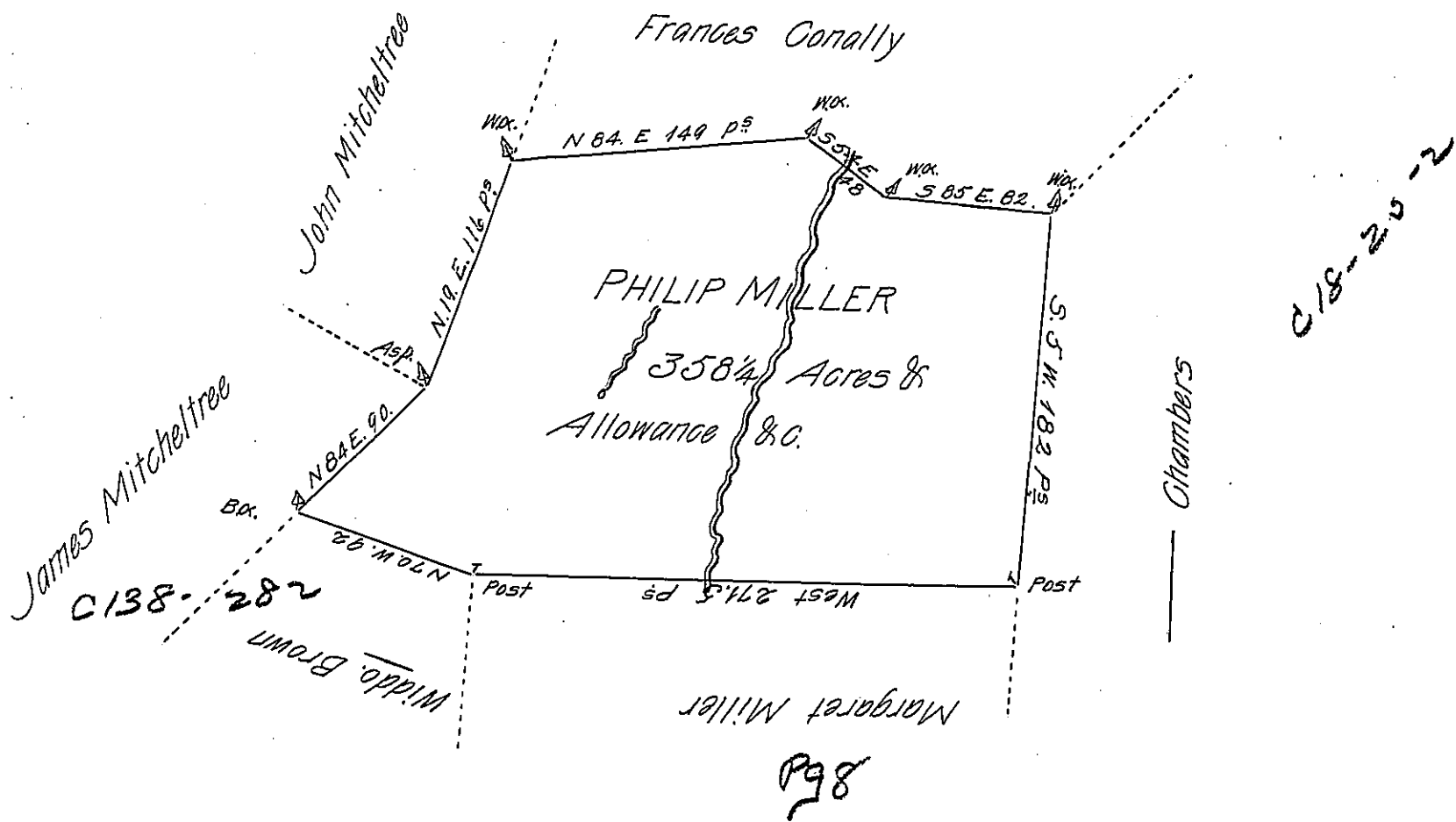


C-74-118



A Draught of a Tract of Land Called — Situated in White Deer Hole Vally in  
 White Deer ~~Hole~~ Township in the County of Northumberland & Joining Land Sur-  
 veyed for Widow Brown Survey'd for Philip Miller on the 9th Day of June 1785  
 by Virtue of his Warrant Bearing Date the 31<sup>st</sup> Day of May 1785 Containing  
 (obl.) Hundred & fifty Eight & a fourth with the allowance of Six Pct. for Roads &c.

Jo. J. Wallis D.S.

To John Lukens Esq<sup>r</sup> }  
 Surveyor Genl }

IN TESTIMONY that the above is a copy of the original remaining on file in  
 the Department of Internal Affairs of Pennsylvania, made  
 conformably to an Act of Assembly approved the 16th day of  
 February, 1833, I have hereunto set my Hand and caused  
 the Seal of said Department to be affixed at Harrisburg,  
 this twentysixth day of October 1905.

*Isaac B. Brown*  
 Secretary of Internal Affairs.